

ACUIX™ MOUNTS AND ADAPTERS

PARAPET, ROOF, WALL, POLE AND PENDANT MOUNTS

Honeywell offers a complete line of mounts and adapters for the ACUIX and ACUIX ES ranges. In simple or complex applications, these mounts and adapters offer affordability and space efficiency without sacrificing performance.

The **HDXWM2** and **HDVWM1** wall mounts are constructed of high tensile cast aluminium and can be mounted directly to a vertical load-bearing surface supporting up to 11.7 kg. The HDXWM2 has a covered weatherproof cable access hole for ease of installation and can be corner or pole mounted using the HDXCMA1 corner mount adapter or the HDXPMA1 pole mount adapter. The HDVWM1 wall mount is for internal use only.

The **HDPRM2** parapet and flat-roof mount has a unique rotating 1.5" NPT threaded mounting nut that allows for easy installation of the dome without having to twist the dome and wiring. The mount is designed to swivel within small clearance limits, which aids in maintenance and installation. The HDPRM2 is constructed of heavy-duty steel and is available in a warm grey finish. For wall mount applications HDPRM2 mounts directly to vertical load-bearing surfaces or to a horizontal load-bearing surface for a roof mount application. The HDPRM2 supports up to 9.1 kg and can withstand winds up to 75 mph (121 kph) when properly fastened to a support structure.

The **HDCM1** ceiling pendant mount utilises a 1.5" NPT, is constructed of heavy-duty steel and is available a warm grey finish. The HDCM1 mounts directly to a horizontal load-bearing surface and supports up to 11.7 kg. It has a unique rotating 1.5" NPT threaded mounting nut that allows for easy installation of the dome without having to twist the dome and wiring.

The **HDXSM1** half swan neck mount bracket with 1.5" NPT is designed for pole mount applications in outdoor environments. It is constructed of steel and available in the 'ACUIX white' colour (RAL 9002).

Market Opportunities

The flexible mounting options for ACUIX make it a suitable dome for most indoor and outdoor installations. Where an aesthetically pleasing installation is needed, such as in banks or retail outlets, Honeywell has a solution with a full line of mounts and adapters. When used with Honeywell's corner mount adapter, coverage for both the front and side areas of a building or car park is possible using a single dome.

Honeywell's pole mount adapters ensure hassle-free installation on tall poles such as in traffic monitoring and marine locations, allowing maximum viewing coverage even during high wind conditions.

Features:

- Heavy-duty design for harsh environments
- Handles wind loads up to 75 mph (121 kph)
- Solid construction ensures maximum strength
- Pivoting mount allows for 'ladder-less' installation and access
- Interconnecting cabling hidden in mount to eliminate exposed cabling
- Removable access door for simplified cable strength connections



HDXWM2



HDVWM1



HDXPMA1



HDXCMA1



HDPRM2



HDCM1

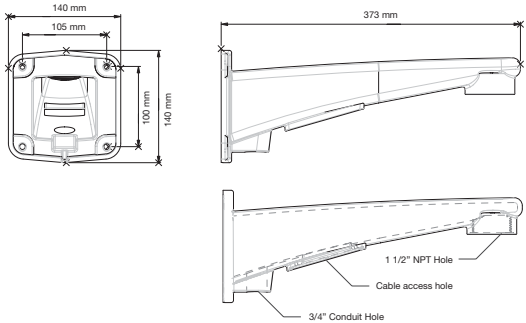


HDXSM1

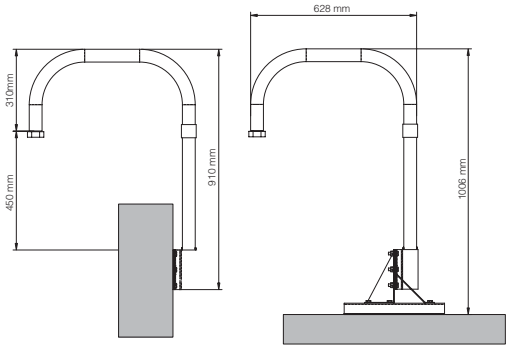
ACUIX™ MOUNTS AND ADAPTERS

SPECIFICATIONS

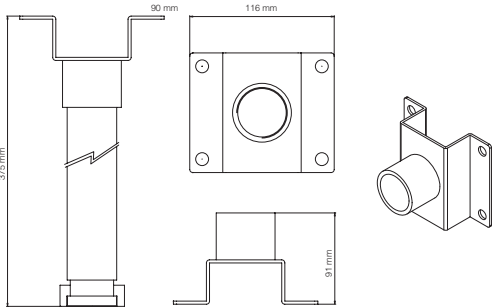
HDXWM2 – Wall Mount	
Construction	High tensile aluminium alloy
Finish	Warm grey
Dimensions	See line drawing
Environment	Indoor and Outdoor
Weight	1.45 kg
Max Load	11.7 kg
Wind Load	75 mph (121 kph)



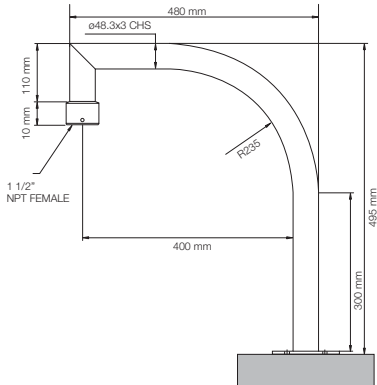
HDPRM2 - Parapet and Roof Mount	
Construction	Steel
Finish	Warm grey
Dimensions	See line drawing
Environment	Outdoor
Weight	10.2 kg
Max Load	9.1 kg
Wind Load	75 mph (121 kph)



HDCM1 – Ceiling Mount for Indoor Pendant	
Construction	Aluminium
Finish	Warm grey
Dimensions	See line drawing
Environment	Indoor and Outdoor
Weight	1.8 kg



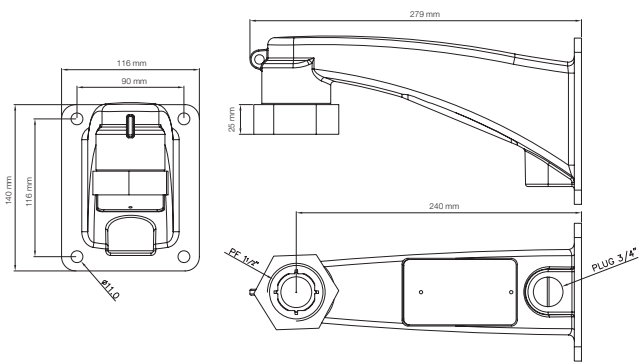
HDXSM1 - Half Swan Neck Mount	
Construction	Steel
Finish	White (RAL 9002)
Dimensions	See line drawing
Environment	Outdoor or Indoor
Weight	5.0 kg



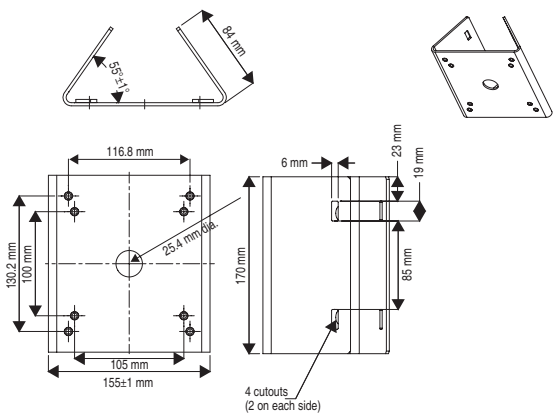
ACUIX™ MOUNTS AND ADAPTERS

SPECIFICATIONS

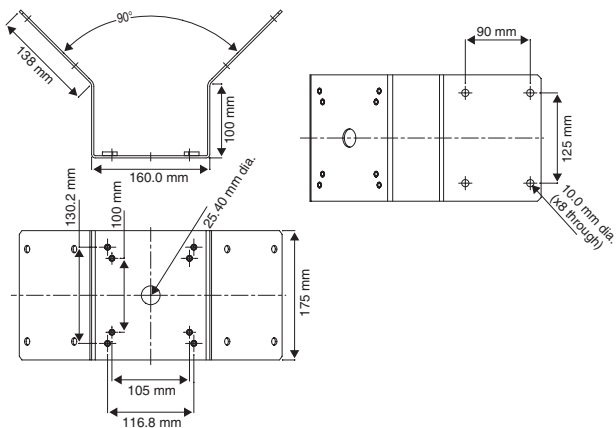
HDVWM1 – Wall Mount	
Construction	Cast Aluminium
Finish	RAL 7035
Dimensions	See line drawing
Environment	Indoor
Weight	1.15 kg
Max Load	11.7 kg



HDXPMA1 – Pole Mount Adapter	
Construction	Steel
Finish	Warm grey
Dimensions	See line drawing
Environment	Indoor and Outdoor
Weight	1.8 kg
Max Load	13.6 kg
Wind Load	75 mph (121 kph)



HDXCMA1 – Corner Adapter	
Construction	Steel
Finish	Warm grey
Dimensions	See line drawing
Environment	Indoor and Outdoor
Weight	1.8 kg
Max Load	13.6 kg
Wind Load	75 mph (121 kph)



ACUIX™ MOUNTS AND ADAPTERS

	Indoor	Outdoor
HDVWM1	X	
HDXWM2	X	X
HDPRM2	X	X
HDCM1	X	
HDXPMA1	X	X
HDXCMA1	X	X
HDXSM1	X	X

Ordering	
HDVWM1	Indoor Only Wall Mount
HDXWM2	Indoor and Outdoor Wall Mount
HDXSM1	Half Swan Neck Pole Mount
HDPRM2	Parapet and Flat Roof Mount
HDCM1	Ceiling mount for Indoor Pendant (Not for outdoor use)
HDXPMA1	Pole Mount Adapter for HDXWM2 and Rugged Housing
HDXCMA1	Corner Mount Adapter for HDXWM2 and Rugged Housing

NOTE: Honeywell reserves the right, without notification, to make changes in product design or specifications.

For additional information,

please visit www.honeywell.com/security/me

Honeywell Security Group

Honeywell Systems Group
Honeywell Middle East FZE
Post Office Box 18530
LOB Building 08, Office 199
Jebel Ali
Dubai
United Arab Emirates
Tel: 971-04-881-5506
www.honeywell.com



HVS-ACUIXMTADT-ME-02(1109)DS-GCSC
November 2009
© 2009 Honeywell International Inc.